

ABSOLUTE ONLINE ESTATE AUCTION – ONSITE

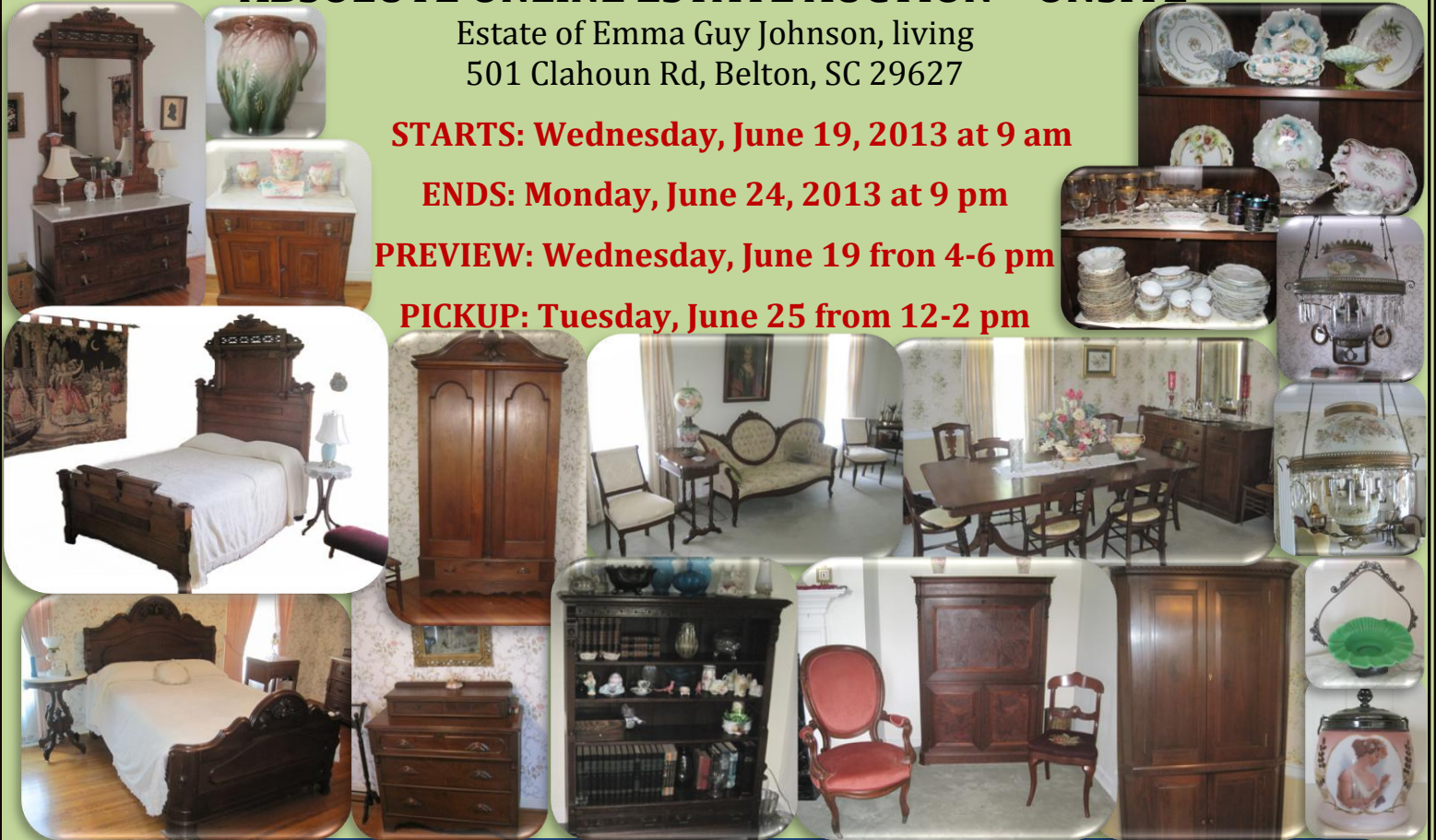
Estate of Emma Guy Johnson, living
501 Clahoun Rd, Belton, SC 29627

STARTS: Wednesday, June 19, 2013 at 9 am

ENDS: Monday, June 24, 2013 at 9 pm

PREVIEW: Wednesday, June 19 from 4-6 pm

PICKUP: Tuesday, June 25 from 12-2 pm



Partial Listing: Early Southern Cherry Corner Cupboard w/ Inlaid Escutcheon, Dental Molding, Wooden Pulls & Matching Buffet, Victorian Crotch Mahogany Marble Top Secretaire a Abattant w/ Beautiful Fitted Interior, Walnut Victorian Eastlake 3 Pc. Bedroom Suite (High Back Bed, Marble Top Dresser w/ Mirror & Marble Top Washstand), Walnut Victorian Fruit Carved Bed, Walnut Victorian Armoire w/ Arched Pediment & Applied Carving, Walnut Victorian Eastlake Open Bookcase w/ 2 Drawer Base & Fluted Columns, Ornate Gilt Metal Marble Top Plant Stand, Mahogany Duncan Phyfe Style Dining Table, 6 Matching Walnut Victorian Chairs, Walnut Victorian 3 Drawer Chest w/ Glove Box Top & Carved Pulls, Walnut Victorian Oval Marble Top Stand, Pair Of Louis XVI Style Upholstered Side Chairs w/ Fluted Legs, 2 Adjustable Height Victorian Oil Lamp Hanging Chandeliers w/ Paint Decorated Shades & Prisms – Converted To Electric, Gone With The Wind Style Lamps, Hand Painted Milk Glass Victorian Biscuit Jar, Victorian Silverplate Brides Basket w/ Green Satin Glass Insert, Carnival Glass Orange Tree Bowl, Carnival Glass Peacock & Fountain Tumblers, Bristol Glass, Venetian Glass, Fine Porcelain Incl. R.S. Prussia, Art, Majolica, Walnut Victorian Steeple Clock Pat. 1881, Iron Outdoor Furniture & So Much More!!

DIRECTIONS: From I-85: Take exit 46 for S Carolina 291/Mauldin Rd toward Pleasantburg Dr/Augusta Rd, Take exit 46A on the left for S Carolina 291 S toward Augusta Rd, Take exit 46B for S Carolina 291 S, Merge onto SC-291/S Pleasantburg Dr Continue to follow SC-291, Continue onto Augusta Rd, Turn right onto SC-247/Cooley Bridge Rd, Turn right onto Calhoun Rd, Destination will be on the right.

Online Terms & Conditions: All items will be sold at online auction only. All online auction items are sold 'as is, where is' & ALL sales are FINAL! There are NO warranties or guarantees expressed or implied on any of the merchandise. Bidders are given ample time to preview items, but in the event that they cannot preview, they acknowledge by bidding that they accept the auction firm description when they bid on a particular item. **WHAM** will not be responsible for any errors or omissions in the description of the merchandise. Invoices will be sent to all winning bidders the morning following the auction & credit cards on file will be charged immediately. A 15% buyer's premium will be added to all purchased lots. Items to be shipped will be subject to 'Shipper's Instructions' per our information page on Proxibid. Specific questions concerning auction please contact WHAM Auctions, Appraisals & Real Estate, LLC at **864-801-9468**.



AUCTIONS • APPRAISALS • REAL ESTATE

Live Online Bidding Powered By: proxibid

104 Middleton Way – Greer, SC
864-801-9468
SCAF 3988