

ABSOLUTE ONLINE ESTATE AUCTION – ONSITE

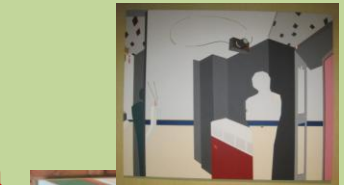
190 Chapman Rd, Greenville, SC 29605

STARTS: Friday, May 17, 2013 at 9 am

ENDS: Wednesday, May 22, 2013 at 9:00 pm

PREVIEW: Friday, May 17 from 5-7 pm

PICKUP: Thursday, May 23 from 12-2 pm



Estate of Edward Hofmann, deceased. Partial Listing: Fabulous Italian Hand Carved Court Cupboard w/ Glass & Iron Top Cabinet Doors & 2 Carved Bottom Doors Under 2 Drawers, Impressive Italian Heavily Carved Court Cupboard w/ One Shelf Upper & 2 Drawers Over 2 Carved Cabinet Doors, Decorative Metal Barometer – Made In England, SUPER Retro Pcs. (Chairs, Cube Tables, Drexel China Cabinet & Table w/Chairs, Telefunken Radio/Stereo Made In W. Germany, Chrome Lamps, Art) Antique Le Castel Clock, Vintage Fleischmann HO Train Set w/ Kibri Station, Tracks & Lionel Transformer, Vintage Children's & Adults Ice Skates, Sm. Fredricks Willis Inc. Pool Table, Wood Terrarium, Nur Fur Spezial-Gerate Fullol German Bakelite Auto Part , Early Cast Iron Andirons, Linen, Oak Bedroom Suite, Pine Bed, Lift Bed, Lustre, Cordials, Bone Ship, Wood Carvings, Porcelain, Hand Painted Japan Charger, 2 Stress-Less Recliners Made In Norway, & Much MORE!

DIRECTIONS: From I-85: Take exit 42 to merge onto I-185 N/US-29 N toward Greenville, Turn right onto Henrydale Ave, Turn right onto Grove Rd, Turn left onto W Faris Rd, Turn right onto Michaux Dr, Turn left onto E 7 Oaks Dr, Take the 1st right onto Leconte Woods, Turn right onto Chapman Rd, Destination will be on the left.



WHAM

AUCTIONS • APPRAISALS • REAL ESTATE

Live Online Bidding Powered By: **proxibid**

104 Middleton Way – Greer, SC
864-801-9468
SCAF 3988

Online Terms & Conditions: All items will be sold at online auction only. All online auction items are sold 'as is, where is' & ALL sales are FINAL! There are NO warranties or guarantees expressed or implied on any of the merchandise. Bidders are given ample time to preview items, but in the event that they cannot preview, they acknowledge by bidding that they accept the auction firm description when they bid on a particular item. **WHAM** will not be responsible for any errors or omissions in the description of the merchandise. Invoices will be sent to all winning bidders the morning following the auction & credit cards on file will be charged immediately. A 15% buyer's premium will be added to all purchased lots. Items to be shipped will be subject to 'Shipper's Instructions' per our information page on Proxibid. Specific questions concerning auction please contact WHAM Auctions, Appraisals & Real Estate, LLC at **864-801-9468**.