

ABSOLUTE ONLINE ESTATE AUCTION

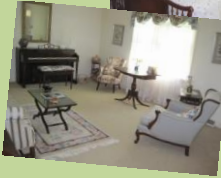
117 Duncan Chapel Rd, Greenville, SC

Starts: Friday July 13, 2012 at 9:00 am

Ends: Tuesday July 17, 2012 at 9:00 pm

Preview: Friday July 13, 2012 from 5 – 7 pm

Pick up: Wednesday July 18, 2012 from 3 – 5 pm



Directions: From N. Pleasantburg Dr. continue onto S. Carolina 253/ Paris Mountain Rd/ State Park Rd & turn right onto US-276 N/ Poinsett Highway & travel app. 1.4 miles. Turn left onto County Rd 466/ New Perry Rd & travel app. .1miles. Take the 1st right onto County Rd 170/ Duncan Chapel Rd – Destination will be on the left

Partial Listing: Oak Cane Back Rocker, Entry Hall Table & Mirror, Cherry Dresser w/ Mirror, Wicker End Tables, Pr. Maple Twin Beds, Maple Rocker, Drew French Provincial Style Bedroom Suite, Corner Entertainment Center, Rattan Chairs, End Tables & Coffee Tables, Throw Rugs, Cherry Gate Leg Drop Leaf Table, Child's Black Lacquer Rocker, Poole Studio Piano, Flip Top Mahogany 1 Drawer Table, Maple Coffee Table, Slant Front Secretary, Chippendale Style Camel Back Sofa, Swivel Rocker, Maple Dresser, Wedgwood Adams China, Ginger Bread Mantle Clock, Weighted Sterling, Lamps, Framed Water Colors, Silver Plate, Oils on Artist Board, Whitehall Glassware, Fostoria Ironstone Pitcher & Bowl, Jewel Tea Autumn Leaf by Hall, Hull, Mikasa Montclair China, Baskets, Sea Shells, Pottery – Still have the attic to unpack!

Personal Property Terms & Conditions: All items will be sold at online auction only. All items are sold 'as is, where is' & ALL sales are FINAL! There are NO warranties or guarantees expressed or implied on any of the merchandise. Bidders are given ample time to preview items, but in the event that they cannot preview, they acknowledge by bidding that they accept the auctioneers description when they bid on a particular item. **WHAM** will not be responsible for any errors or omissions in the description of the merchandise. Invoices will be sent to all winning bidders the morning following each auction & credit cards on file will be charged immediately. A 15% buyer's premium will be added to all purchased lots. Items to be shipped will be subject to 'Shipper's Instructions' per our information page on Proxibid. Specific questions concerning auction please contact WHAM Auctions, Appraisals & Real Estate, LLC at **864-801-9468**.

Go to www.whamauctions.com for additional information & Terms & Conditions!

Register to bid online!

Visit: www.proxibid.com/wham

proxibid.



www.whamauctions.com

104 Middleton Way - Greer, SC
864-801-9468

SCAF 3988