

# ABSOLUTE ONLINE AUCTION AT WHAM - #6

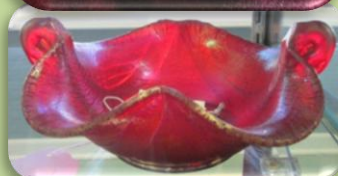
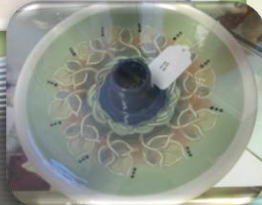
104 Middleton Way, Greer, SC 29650

**STARTS: Sat. 4/12 at 9 am**

**STAGGERED ENDING TIMES: Mon. 4/14 starting at 9 pm**

**PREVIEW: Fri. 4/11 from 11-2 pm**

**PICKUP: Tues. 4/15 from 12-2 pm**



German Pink Pig Collectible, Royal Copenhagen Porcelain Mermaid Figurine, Lots of Fenton & Other Art Glass, Wade England Figurines, Roseville & Other Art Pottery, Nachtmann Crystal Figurine, Lenox, Carnival Glass, 5 Depression Glass Knives, Oriental & African Statues/Art, Cloisonné, Yamaha Flute In Case, Royal Doulton & Beswick Toby Mugs, Fiesta & Hall Autumn Leaf Teapots, "Tom & Jerry" Depression Glass Punch Set, Bisque Piano Babies, Boyd Vaseline Glass Elephant, Camel & Lion Covered Glass Candy Dishes, Ikebana Vase, Poinsett Hotel - Greenville SC Gorham EP Cup & Much More!

**DIRECTIONS:** From 291 take Wade Hampton Blvd/HWY 29 towards Greer. Turn RIGHT onto W POINSETT ST/SC-290/SC-101. Take the 2nd LEFT onto MIDDLETON WAY. Showroom is on the RIGHT.

**Online Terms & Conditions:** All items will be sold at online auction only. All online auction items are sold 'as is, where is' & ALL sales are FINAL! There are NO warranties or guarantees expressed or implied on any of the merchandise. Bidders are given ample time to preview items, but in the event that they cannot preview, they acknowledge by bidding that they accept the auction firm description when they bid on a particular item. WHAM will not be responsible for any errors or omissions in the description of the merchandise. Invoices will be sent to all winning bidders the morning following the auction & credit cards on file will be charged immediately. A 15% buyer's premium will be added to all purchased lots. Items to be shipped will be subject to 'Shipper's Instructions' per our information page on Proxibid. Specific questions concerning auction please contact WHAM Auctions, Appraisals & Real Estate, LLC at 864-801-9468.



# WHAM

AUCTIONS • APPRAISALS • REAL ESTATE

Live Online Bidding Powered By: **proxibid**

104 Middleton Way - Greer, SC  
864-801-9468  
SCAF 3988

[www.whamauctions.com](http://www.whamauctions.com)